



KESTON PRIMARY SCHOOL AND NURSERY NEW RECEPTION PARENTS' MEETING

26th June 2024

Welcome!



- Brief introduction to Keston
- The EYFS (Early Years Foundation Stage)
- In the Classroom
- Support from Home
- Preparing for School



INTRODUCTIONS



Mrs Green
Headteacher



Mrs Eason
Assistant
Headteacher
Standards



Mrs Stevens
Assistant
Headteacher
Inclusion



Mrs Storey
Assistant
Headteacher
EYFS Leader



Miss East
Red Class
Monday and
Tuesday



Mrs Meadowcroft
Red Class
Wednesday -
Friday



Mr Reed
Blue Class

RESPECT, BELIEVE, ACHIEVE

Vision 2026

Standards and Achievement

We empower every child to be an independent and resilient learner, in order to achieve their full potential. We recognise, value, and celebrate each child's achievements, both academically and personally.

We encourage them to be responsible citizens who positively contribute to their community.



Provision

We nurture our children's innate curiosity and love of learning. Our engaging curriculum is diverse, and ever evolving.

Our children enjoy learning together in a creative, inclusive, and stimulating environment.



Wellbeing

We put wellbeing at the heart of our school to ensure positive attitudes and successful learning. Our environment is safe and nurturing for everyone.

We believe in ourselves and each other.



Partnership and Community

Our school community – children, families, staff, and governors - work together with mutual respect and a shared sense of belonging to ensure the success of our school.

We contribute to the wider community and encourage their involvement in our children's learning and development.



Ofsted
February
2023



Partnership, Achievement, Community & Excellence

THE EARLY YEARS FOUNDATION STAGE

Areas of Learning and Development			
Prime Areas			
Communication and Language	Personal, Social and Emotional Development	Physical Development	
Listening, Attention and Understanding Speaking	Self-Regulation Managing Self Building Relationships	Gross Motor Skills Fine Motor Skills	
Specific Areas			
Literacy	Mathematics	Understanding the World	Expressive art and Design
Comprehension Word Reading Writing	Number Numerical Patterns	Past and Present People culture and Communities The Natural World	Creating with materials Being Imaginative and Expressive

ASSESSMENT



Welcome to the
Reception Baseline Assessment

Please log in below

Username

Password

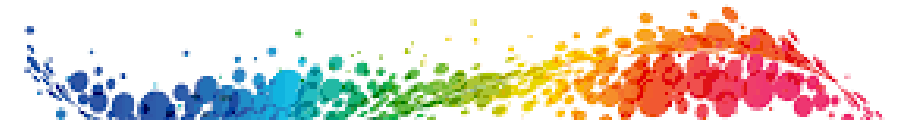
[Forgot your password?](#)

[Log in](#)

[Trouble logging in? Click here](#)

[Log out](#)

[Terms and conditions](#)



Baseline:

- Completed in the first 6 weeks of school
- An activity-based assessment of pupils' starting points in:
 - language, communication and literacy
 - Mathematics
- No numerical score will be shared and the data will only be used at the end of year 6 to form the school-level progress measure.
- Teachers will receive a series of short, narrative statements that tell them how their pupils performed in the assessment. These can be used to inform teaching within the first term.



ASSESSMENT

EYFS Profile:

At the end of the school year you will receive an EYFS report for your child, detailing whether they have met the goals for each area of learning.

- You will be told whether your child's development is emerging or expected in relation to the goals.
- More details about the EYFS Profile are available from www.foundationyears.org.uk and we will give out a copy of all the goals during the Autumn term.
- Your feedback and contributions from home on where your child is achieving can help us to make end of year judgements.



	Areas of Learning	GLD	Early Learning Goals	Valid Values	
Prime Areas	Communication and Language	✓	E01 - Listening, Attention and Understanding	2 <i>Expected</i>	
		✓	E02 - Speaking		
	Personal, Social and Emotional Development	✓	E03 - Self-regulation		
		✓	E04 - Managing Self		
		✓	E05 - Building Relationships		
	Physical Development	✓	E06 - Gross Motor Skills		
		✓	E07 - Fine Motor Skills		
Specific Areas	Literacy	✓	E08 - Comprehension	1 <i>Emerging</i>	
		✓	E09 - Word Reading		
		✓	E10 - Writing		
	Mathematics	✓	E11 - Number		A* <i>Absent</i>
		✓	E12 - Numerical patterns		
	Understanding the world		E13 - Past and Present		
			E14 - People, Culture and Communities		
			E15 - The Natural World		
	Expressive Arts and Design		E16 - Creating with Materials		
			E17 - Being Imaginative and Expressive		

* If any goal is marked A, then all goals must be marked A

DAILY TEACHING

Each day there will be a mixture of:

- Whole Class Work (number rhymes and songs, counting, games, listening to stories, learning and talking about number facts, shared writing activities, phonics).
- Small focus group activities.
- Exploration and Play.
- Child Initiated Learning. This is where children access different learning areas within the environment. This is a great opportunity for children to apply and consolidate prior learning.



PHONICS

We use Little Wandle Letters and Sounds Revised to teach phonics, this is the method of teaching reading through the identification of sounds.

Phonics is taught everyday and in a session they will learn a new sound, how to form the letter and they will begin to blend sounds to read words.

- We are keen to share with you how we teach this and we will invite you to a phonics meeting during the Autumn Term.

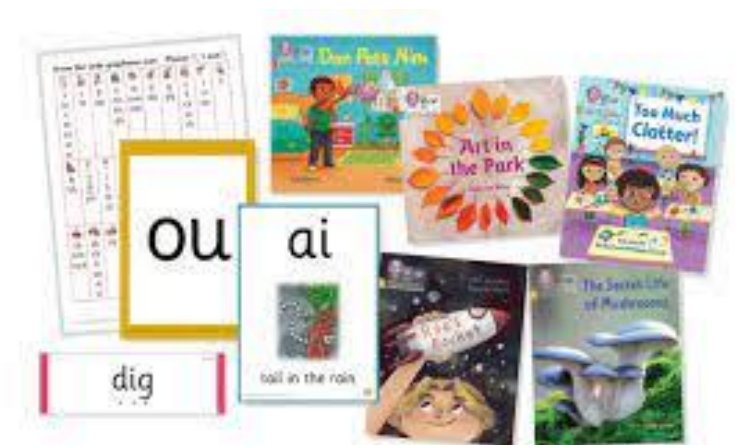
- If you would like to find out more information on Little Wandle then you can visit the link below:

<https://www.littlewandlelettersandsounds.org.uk/resources/for-parents/>



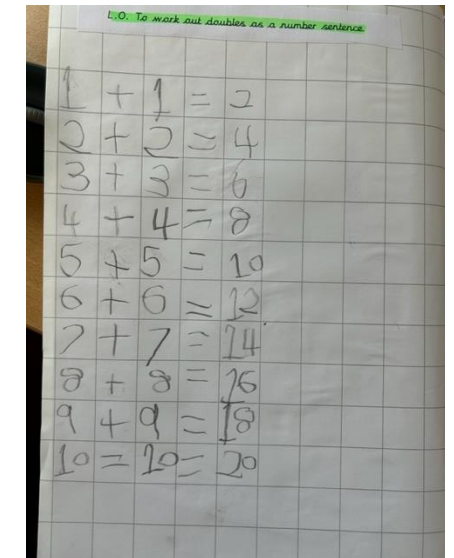
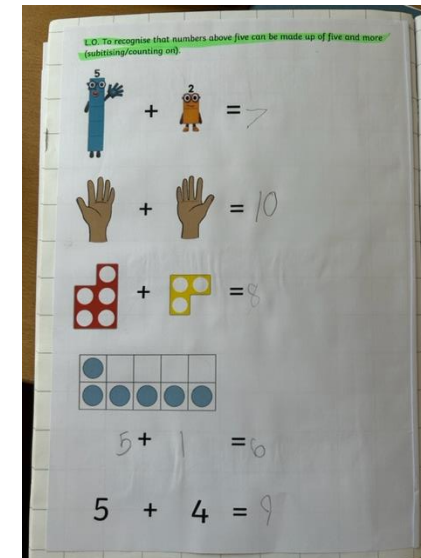
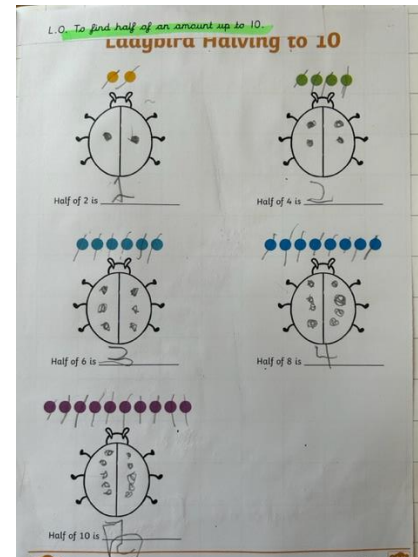
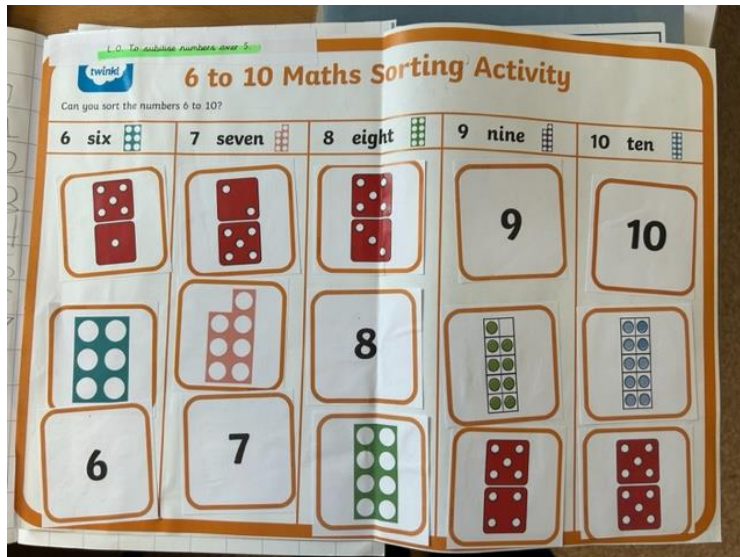
Grapheme chart Phase 2 and 3

s	t	p	n	m	d	g	c	r	h	b	f	l	j	v
ss	tt	pp	nn	mm	dd	gg	ck	rr		bb	ff	ll		vv
							cc							
w	x	y	z	qu	ch	sh	th	ng	nk	a	e	i	o	u
			zz											
			s											
ai	ee	igh	oa	oo	oo	ar	or	ur	er	ow	oi	ear	air	



Maths

- Maths is taught daily.
- The children access a whole class carpet session and they will then work in smaller groups to consolidate their learning.
- Maths sessions are practical and children are given the opportunity to use a variety of resources to deepen their understanding of number and number patterns.



‘Parents are children’s first and most enduring educators. When parents and practitioners work together, the results have a positive impact on children’s learning and development.’

Ways in which you can share your child’s learning:

- Evidence Me – an app that we use to observe learning and development. We encourage parents to comment on observations and upload their own too.
- Half-termly ‘Stay and Play’ sessions – a chance to look through your child’s learning journal and see their learning and development in the classroom
- Class Assembly once a year
- A formal termly parents evening
- An end of year school report



Evidence Me



The EYFS recognises that you, the parents, are the main educators of your child. As a result, we can use information about your child's learning at home to help inform our judgement of your child's development.

We use Evidence Me to share what your child has been learning in school.

Please upload photos of some of the wonderful things your child does at home. We enjoy asking the children about these.

We will ask for your permission to use photos within the app, Evidence Me.



Lunchtimes

- All children are entitled to free school meals, which are provided by Olive catering
- Weekly menus are available - displayed in the school and uploaded to our website
- Alternatively, your child may bring a packed lunch; please follow the school's packed lunch policy and make these as healthy as possible
- We are a nut free school here at Keston so please **do not** send in any products that may contain nuts
- If your child has any food allergies, please let us know **before** their first day of school, on the Admissions form provided
- Cool milk provide milk for every child until they are 5 and then for a small fee after this time. Cool Milk forms are available in packs.



Preparing for school



Book Bags:

- All children require a book bag to carry Reading Records, School Letters and work etc. from school and home.
- Please name the book bag and send it in daily.
- Please check them at home daily for any school letters or messages and to check Reading Records.

Snacks:

- Snacks are provided for all EYFS and Key Stage 1 children through a government scheme to help promote Healthy Eating.
- The snack is always a piece of fruit or vegetable, usually either an apple, banana, carrot, tomato, orange or raisins.
- We never know what will arrive – it is a surprise!

School
Fruit and Vegetable
Scheme

Uniform

- Children must wear a full, seasonal school uniform at all times.
- Shoes must be easy for the children to put on/take off independently.
- We like to play outside in all weathers and we may ask you (if possible) to provide a pair of welly boots in the future. If you have any old waterproof clothing that you would like to donate, please speak to class teachers as this would be greatly appreciated!
- Uniform can be purchased from Claddish in Wallington.
- More information available in your pack.
- Please make sure all uniform is named.



Breakfast and After School Club

We offer **Breakfast Club** every day from 7:30am in school.

- Please complete the registration form in your pack.
- This is a non booking facility.

We also offer **After-School Care**

- Registration forms in your pack.
- Open daily 3.15pm until 6pm.
- We offer an early or late session.
- Sessions bookable in advance.



Other Information

Educational and Local Visits

- We usually have a class outing in the summer term, which will support the children's learning in all areas of the curriculum
- We also enjoy getting out into the local area when we can



Medical Info



- Allergies and medical conditions need to be communicated to the school **before** the first day
- If your child requires regular medication or has been prescribed a course of antibiotics, a medical form must be filled out in order for staff to administer this. Can be downloaded from the website.
- Asthma pumps need to be sent in on the first day labelled clearly with your child's name, along with a completed medical form above

Other Information

Emergency Contact with Parents

- Please ensure that we have **2** up to date emergency contact numbers

Labelling Clothes

- Please label everything (and we mean everything) as items will get lost!

School Fund

- Used to provide Christmas activities, gifts, cooking, some theatre productions etc
- A voluntary contribution of £10.00 for your first child, plus £5.00 each for siblings, is requested to make these things possible

Swimming

- Children will swim in the on-site school pool 1x weekly from the summer term
- More information will follow later in the year

Other

- Parent Pay is the method used to pay for things such as school trips, extra curricular activities and breakfast club. Instructions will be given out in the first week of term
- Pupil Premium – click the link below for an outline of the free school meals scheme. If you think you meet any of the criteria, please fill out a form on this website/poster in your pack



Timings and Punctuality

Timings:

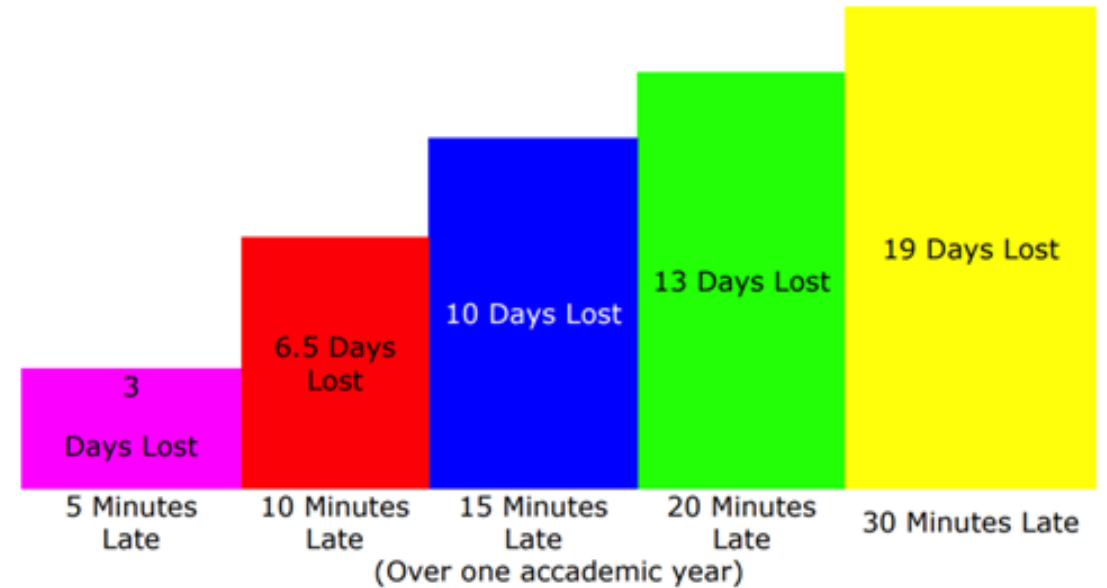
- Doors open at 8:40am (drop off at the classroom doors through the Reception Playground)
- School starts at 8.45
- Lunch 12.00 -1.00pm
- End of day 3:15pm

We expect:

- All children will arrive on time and be appropriately prepared for the day – continued lateness will be followed up by the school office or a senior member of staff.
- All parents are to sign in their child if arriving late on our Entry System in the school office.
- Persistent lateness could be referred to the Education Welfare Officer and be dealt with in the same way as poor attendance is.

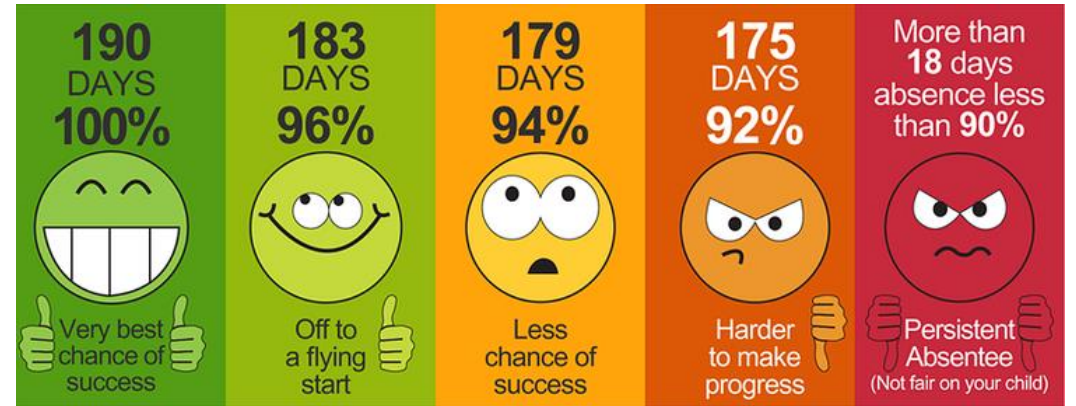
Every Minute Counts

If you arrive late to school everyday your learning begins to suffer. Below is a graph showing how being late to school everyday over a school year adds up to lost learning time.



Attendance

- Good attendance is essential to the children's success at school. If days are regularly missed, then continuity of learning and progress are significantly hampered as children find it difficult to catch up with missed work.



- The school takes continual absence very seriously and will follow up all non attendance. The Governors and the Government (DfE), monitor levels of attendance and a report is presented to the Local Education Authority on a termly basis.
- Holidays are not to be taken in term time – due to a change in government regulations we are unable to authorise holiday absence even if your child has excellent attendance. Any absence for holidays will be unauthorised and if the attendance falls below an acceptable level may incur fines.
- A leave of absence in term time can only be authorised in exceptional circumstances.

Transition into School



- We have already started meeting nurseries and visiting some settings to get to find out about meet children in an environment familiar to them.
- Keston Nursery – Transition session meet the class teacher and see the classrooms.
- Other settings – Teddy Bears Picnic. Details are in your pack.
- Story time – 2.30pm Friday 5th July
- 1 to 1, 15 minute meetings with the class teacher/s in September – either Wednesday 4th or Thursday 5th.
- Stay all day, for one day, in small groups (staggered start times) – either Friday 6th, Monday 9th or Tuesday 10th.
- Then all in all day from Wednesday 11th September.

Do you have
any
Questions? 

Keston Primary School

Keston Avenue

Coulsdon

CR5 1HP

Tel: 01737 555103

email office@keston.croydon.sch.uk