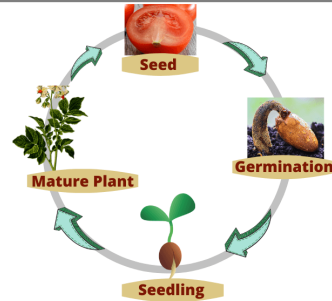
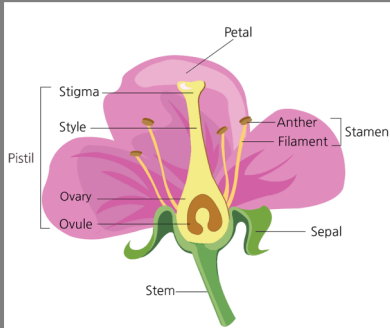


Circle of Life: Key Learning

Diagrams and Images



Important Facts / People: A Human's Life Cycle

Prenatal

Cells grow and develop into a foetus

Foetus

At this time, a baby is growing inside its mum's womb.

Baby

A baby is born after spending nine months inside the womb

Childhood

At this stage, you learn to walk and talk.

Adolescence

Children go through the physical changes of puberty and then become teenagers.

Adulthood

Your body is fully developed

Old age

The last stage in the life cycle of a human.

Vocabulary / Key Terms

Pollination	The process by which pollen is transferred to the female parts of the plant which means the plants
Seed dispersal	The movement or transport of seeds away from the parent plant
Photosynthesis	The process by which green plants use the sun's energy from sunlight along with water and carbon dioxide to produce their own food in the form of glucose (sugar).
Fertilisation	The male and female reproductive cells join together
Asexual reproduction	A process where one parent produces new life
Sexual reproduction	Two parents are needed to produce new life
Life cycle	The changes a living thing goes through
Puberty	The stage of development between childhood and adulthood

Useful websites: <https://www.bbc.co.uk/bitesize/topics/zgssgk7>