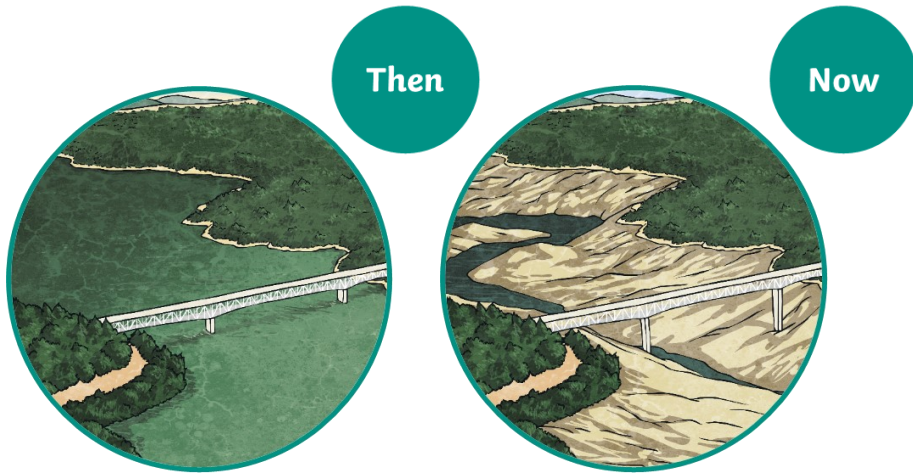


Year 4 - A Warmer World Key Learning

Maps and Images



Important Facts

Over the past 800,000 years the earth's climate has fluctuated, with periods of warmer temperatures and periods of colder temperatures.

300,000 years ago, average temperatures were 4°C warmer than today (interglacial). 420,000 years ago, average temperatures were 9°C colder than today.

More recently the earth's climate has been rapidly warming. In 1883, the average temperature was 13.5°C, whereas in 1960 the average temperature had risen to 14.0°C. By 1985, the average temperature had risen to almost 14.4°C.

Sea levels rising has been caused by the melting of ice caps and sheets. This water has caused coastal flooding in places such as Bangladesh and the Pacific Islands.

With increased global temperatures, ecosystems have become unbalanced meaning the threat to species like coral and polar bears is more pressing than ever.

As global temperatures increase, the driest parts of the world are becoming drier. This creates problems for food production which can lead to starvation in some parts of the world.

Vocabulary / Key Terms

Climate	The average weather conditions over a long period of time.
Climate change	A change in global or regional climate patterns .
Global warming	The gradual increase in the overall temperature of
Fossil fuels	A natural fuel such as coal or gas formed from the
Greenhouse gas	Gases in the air that trap energy from the sun e.g.
Greenhouse effect	Warming of the earth caused by the trapping of

Useful websites: <https://climatekids.nasa.gov/climate-change-meaning/#:~:text=The%20Short%20Answer%3A,in%20the%20past%2020%20years.>
<https://www.natgeokids.com/uk/discover/geography/general-geography/what-is-climate-change/>